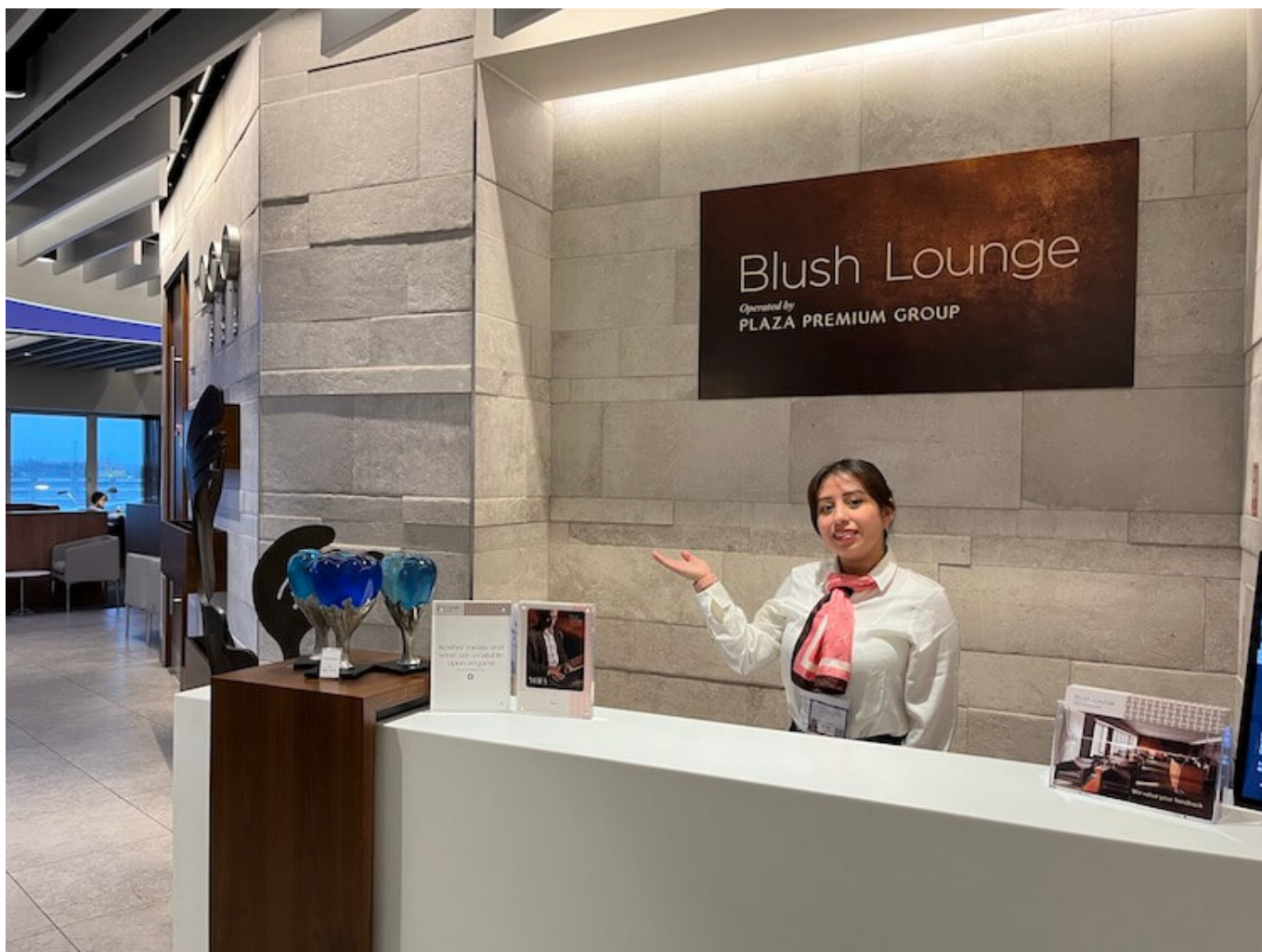


# Plaza Premium Group operates Blush Lounge at Heathrow Airport



Main entrance of Blush Lounge

Plaza Premium Group (PPG) has announced the opening of the new Blush Lounge at London Heathrow Airport. The Blush Lounge is a new brand developed by PPG. The opening marks another count to the Group's strong portfolio of lounge operations in the United Kingdom and across Europe.

The Blush Lounge is located at Terminal 4, Heathrow Airport and can accommodate up to 105 passengers at a time. Travelers will be greeted by a spacious entrance lobby, which leads to a cosy space, with several seats overlooking the runway. Inside the lounge, travelers can also enjoy a sumptuous buffet spread with a selection of food and drinks, with koshered meals available upon request. A wine menu is also available at the lounge.



### Blush Lounge at Heathrow Airport

"We are delighted to be welcoming travelers to the new Blush Lounge. The lounge provides travelers a relaxing and pleasant atmosphere. On top of that, we offer an array of Kosher dining options upon request to suit the different dietary needs of our travelers," said Okan Kufeci, Senior Vice President, Europe, Middle East, and Africa, Plaza Premium Group. "We are also happy to be able to extend our services in one of the world's busiest airports, as Heathrow Airport serves hundreds of destinations across the globe. The opening of the new Blush Lounge strengthens our presence in Heathrow Airport as we have several properties under Plaza Premium Lounge across Terminal 2, 4 and 5, as well as Aerotel, our 82-bedroom in-airport hotel located inside Terminal 3, Arrivals."

Ross Baker, Heathrow Airport's Chief Commercial Officer said, "It's great news for Heathrow that Plaza Premium Group have chosen to add to their network of lounges at the airport. The new Blush Lounge in Terminal 4 is an exciting new hospitality option for passengers of all airlines to depart as they mean to go on from Heathrow."

The Blush lounge is open daily between 3 p.m. until 7 p.m. daily, except Friday, to all travelers regardless of airline and class of travel. Travelers can enjoy 20% off lounge packages for walk-in and online bookings when they sign up to the Smart Traveller membership to receive year round benefits. Corporate cards including AMEX Platinum and Dragon Pass cardholders can access the lounge.